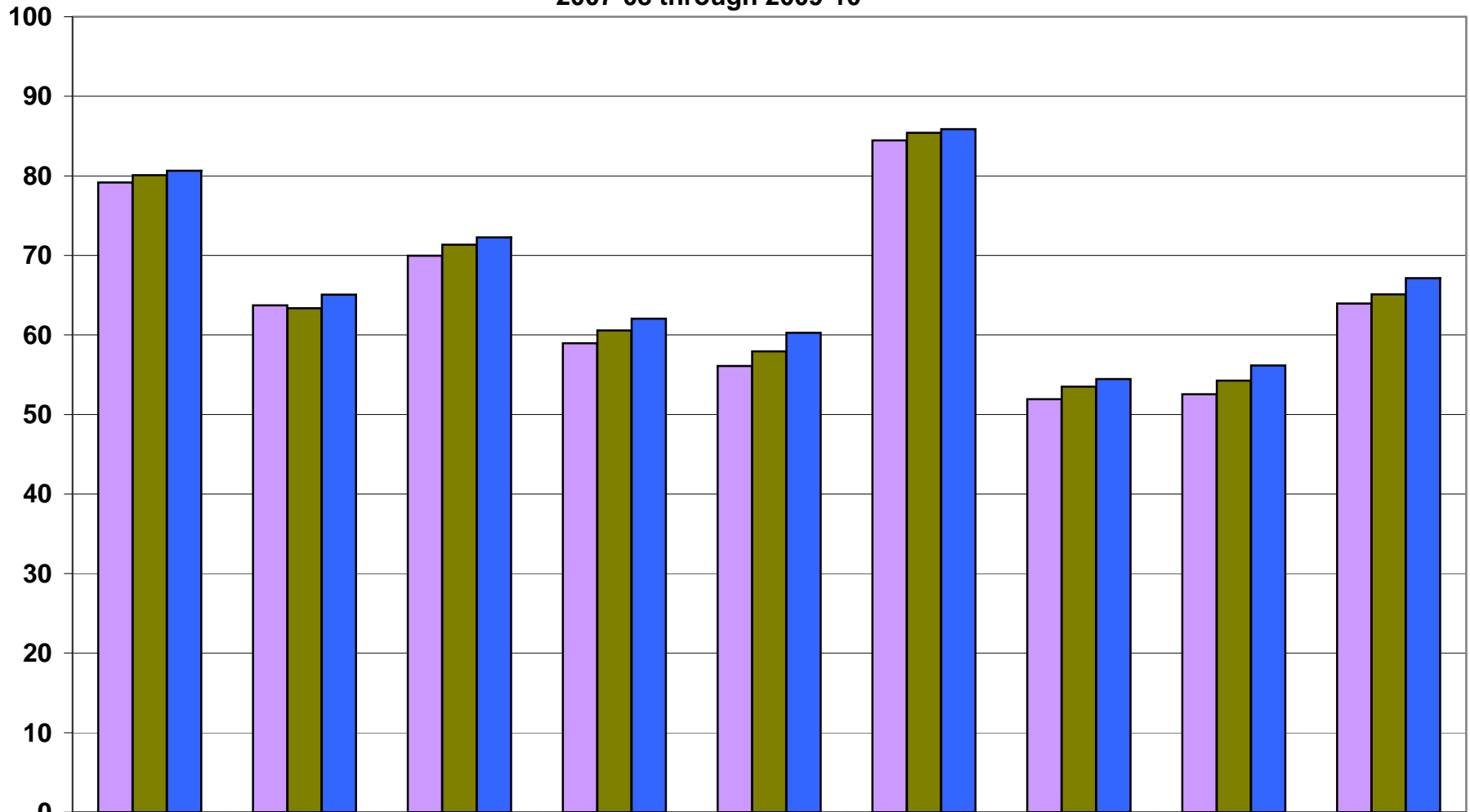
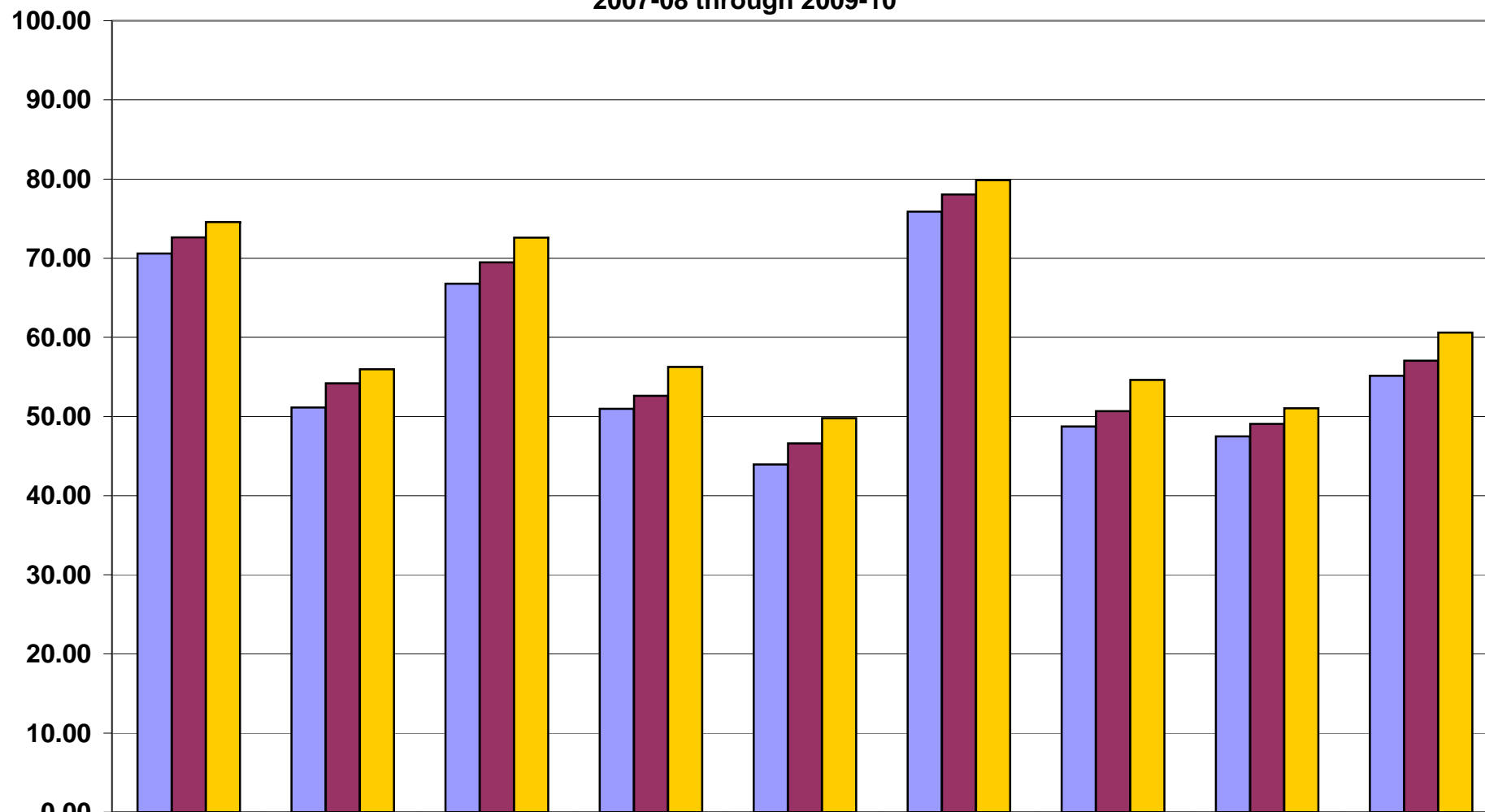


**No Child Left Behind
Minnesota Reading Index Rate by Student Group
2007-08 through 2009-10**



	All-MN	Am Ind-MN	Asian-MN	Hispanic-MN	Black-MN	White-MN	EL-MN	Sp Ed-MN	Lunch-MN
2007-08	79.18	63.72	69.97	58.95	56.1	84.45	51.91	52.56	63.94
2008-09	80.08	63.35	71.33	60.58	57.94	85.42	53.51	54.27	65.09
2009-10	80.64	65.07	72.25	62.05	60.26	85.86	54.44	56.15	67.14

**No Child Left Behind
Minnesota Math Index Rate by Student Group
2007-08 through 2009-10**



	All-MN	Am Ind-MN	Asian-MN	Hispanic-MN	Black-MN	White-MN	EL-MN	Sp Ed-MN	Lunch-MN
2007-08	70.59	51.14	66.79	50.97	43.95	75.87	48.74	47.48	55.15
2008-09	72.64	54.19	69.46	52.60	46.59	78.04	50.69	49.06	57.06
2009-10	74.58	55.97	72.59	56.27	49.79	79.84	54.63	51.05	60.61